

STUDENT FEEDBACK ON CURRICULUM

2019-20

STUDENT FEEDBACK ON CURRICULUM

NAM College provides rich avenues of teaching, learning and research with excellent infrastructure. To review and reform the teaching-learning procedure and to sustain the quality of education, the institution seeks feedback from the students every year. IQAC led quality enhancement process includes feedback collection on various important aspects of the curriculum. For collecting feedback a questionnaire in Google Form containing 22 questions in 5 point Likert Scale was sent to the entire student community of the college. A total of 712 students returned their duly filled in feedback forms. Responses of the students are analyzed and summarized and is presented in the bellow table.

Table Showing the Summary of Analysis of Students' Feedback on Curriculum

Sl. No	Parameters	Positive (Favourable) responses			Neither Positive nor Negative	Negative (Unfavourable) Responses			Grand Total
		5	4	Total		2	1	Total	
1.	How much of the syllabus was covered in the class?	58.3	29.9	88.2	6.2	2.2	3.4	5.6	100
2.	How well did the teachers prepare for the classes?	31.3	62.5	93.8	3.9	1.7	0.6	2.3	100
3.	How well are the teachers able to communicate?	5.8	27.9	83.7	13.5	1.4	1.4	2.8	100
4.	The teacher's approach to teaching can best be described as	32.0	44.0	76.0	20.1	3.7	0.3	4.0	100
5.	Fairness of the internal evaluation process by the teachers	48.0	39.6	87.6	10.7	1.1	0.6	1.7	100
6.	Was your performance in assignments discussed with you	30.1	43.7	73.8	20.5	4.9	0.8	5.7	100
7.	The institute takes active interest in promoting internship, student exchange, field visit opportunities for students	27.4	28.5	55.9	27.2	7.3	9.6	16.9	100
8.	The teaching and mentoring process in your institution facilitates you in cognitive, social and emotional growth	22.2	48.3	70.5	20.6	6.0	2.8	8.8	100
9.	The institution provides multiple opportunities to learn and grow	21.3	49.9	71.2	21.9	6.3	0.6	6.9	100
10.	Teachers inform you about your expected competencies, course outcomes and programme outcomes	34.6	40.6	75.2	17.7	4.	2.7	7.2	100

11.	Your mentor does a necessary follow-up with an assigned task to you	32.3	46.8	79.1	14.7	3.5	2.7	6.2	100
12.	The teachers illustrate the concepts through examples and applications	48.5	35.4	83.9	12.6	2.0	1.5	3.5	100
13.	The teachers identify your strengths and encourage you with providing right level of challenges	35.8	38.6	74.4	17.7	4.2	3.7	7.9	100
14.	Teachers are able to identify your weaknesses and help you to overcome them	32.7	37.4	70.1	17.7	8.1	4.1	12.2	100
15.	The institution makes effort to engage students in the monitoring, review and continuous quality improvement of the teaching learning process	24.6	51.3	75.9	19.1	4.5	0.6	5.1	100
16.	The institute/ teachers use student centric methods, such as experiential learning, participative learning and problem-solving methodologies for enhancing learning experiences.	31.2	45.4	76.6	16.0	4.2	3.2	7.4	100
17.	Teachers encourage you to participate in extracurricular activities.	32.2	43.8	76.0	19.0	3.7	1.4	5.1	100
18.	Training offered by college to improve soft skills, life skills and employability skills make you ready for the world of work	24.4	45.5	69.9	17.1	9.1	3.8	12.9	100
19.	What percentage of teachers use ICT tools such as LCD projector, Multimedia, etc. while teaching	18.5	33.0	51.5	20.5	13.8	14.2	2.8	100
20.	The overall quality of teaching-learning process in your institute is very good	35.5	46.3	81.8	1.3	2.0	0.8	2.8	100
21.	How do you rate the infrastructure of the college	34.6	33	67.6	2.7	5.9	0.8	6.7	100
22.	How do you rate the curriculum?	25.8	36.2	62	32	5.1	0.8	5.9	100

Source: Survey Data

Form the table given above, it can be found that more than three-fourth (i.e more than 75 percent) students have positively responded to 12 out of the 22 questions. Further, 70 – 75 percentage of the students have responded positively to another five questions in the schedule. In other words, more than 70 percentage of the students have positively responded to all the 22 questions, except six questions in the feedback form. This means that, majority of them are satisfied with the teaching and learning process and environment in the college.

Considering the negative responses, question number 19 (What percentage of teachers use ICT tools such as LCD projector, multimedia etc., while teaching?) has got negative responses from 28 percentage of the students. Similarly, 10 to 20 percent of the students have negatively responded to the question numbers seven, 14 and 19. Question number seven (The institute takes active interest in promoting internship, student exchange, field visit opportunities for students) has got negative responses from 16.9 percentage of the students. The remaining two maximum negative responses are related with the question number 14th (Teachers are able to identify your weaknesses and help you to overcome them) and question number 18th (Training offered by college to improve soft skills, life skills and employability skills make you ready for the world of work).

Further, two questions (question numbers seven and 19) in the feedback form have obtained positive responses from less than 60 percentage of students only. The least percentage of positive responses (51.5 percent) is related with question number 19 (What percentage of teachers use ICT tools such as LCD projector, multimedia, etc. While teaching?). Question number seven – (The institute takes active interest in promoting internship, student exchange, field visit opportunities for students) has got positive responses from 55.9 percent

Analysis of the feedback shows both strengths and weaknesses in the teaching and learning process and environment. Though the responses obtained from the feedback shows that majority of the students are satisfied in the teaching learning process and environment, but, indicates certain improvement in developing conducive learning atmosphere is necessary. The percentage of teachers using ICT and related tools should be increased. Similarly, the institution has to take keen interest in promoting internship, student exchange programme, field visit etc. To put it brief, majority of the students are found to be satisfied in teaching learning process adopted in this institution and they adapt to the learning environment existing in the college.

**TEACHERS FEEDBACK ON CURRICULUM
DESIGN AND IMPLEMENTATION
2019-20**

TEACHERS FEEDBACK ON CURRICULUM DESIGN AND IMPLEMENTATION

2019-2020

To review and reform the teaching-learning procedure and to sustain the quality of education, the institution seeks feedback from the faculty every year. The IQAC led quality enhancement process includes feedback collection on various important aspects of the curriculum viz. the need-based importance of the curriculum, clarity of the course objectives, effectiveness of course contents and activities, the learning assessments, availability of referential materials, etc., by using five scale rating, Viz. Strongly Agree, Agree, Neither Agree or Disagree, Disagree and Strongly Disagree. Overall Rating (Mean Value) = 4.37; N=36

Sl. No	Parameters	Positive (Favourable) responses			Neither Agree Nor Disagree	Negative (Unfavourable) Responses			Total
		Strongly Agree	Agree	Total		Disagree	Strongly Disagree	Total	
1	The courses / syllabi taught by me have a good balance between theory and application	30.0	65.0	95	5.0	0.0	0.0	0.0	100
2	The objectives of the syllabi are well defined	37.0	55.5	92.5	7.5	0.0	0.0	0.0	100
3	The books/journals etc. prescribed / listed as reference materials are relevant, updated and cover the entire syllabi	52.5	47.5	100	0.0	0.0	0.0	0.0	100
4	The courses / syllabi of the subjects taught by me increased my interest, knowledge and perspective in the subject area	75.0	17.5	92.5	7.5	0.0	0.0	0.0	100
5	The college has given me full freedom to adopt new techniques /	60.0	32.5	92.5	2.5	5.0	0.0	5.0	100

	strategies of teaching such as group discussions, seminar presentations and learners' participation								
6	I have the freedom to adopt new techniques / strategies of testing and assessment of students	60.0	37.5	97.5	0.0	2.5	0.0	2.5	100
7	Tests and examinations are conducted well in time with proper coverage of all units in the syllabus.	60.0	32.5	92.5	5.0	2.5	0.0	2.5	100
8	The prescribed books are available in the Library in sufficient numbers	55.0	32.5	87.5	5.0	0.0	7.5	7.5	100
9	The environment in the College is conducive to teaching and research	37.5	55.0	92.5	0.0	7.5	0.0	7.5	100
10	The administration is teacher friendly.	62.5	35.0	97.5	0.0	2.5	0.0	2.5	100
11	The college provides adequate opportunities and support to faculty members for upgrading their skills and qualifications	72.5	20.0	92.5	5.0	2.5	0.0	2.5	100
12	ICT facilities in the college are adequate and satisfactory	50.0	37.5	87.5	10.0	0.0	2.5	2.5	100
13	Separate space in college Canteen is available for	30.0	40.0	70.0	20.0	5.0	5.0	10.0	100

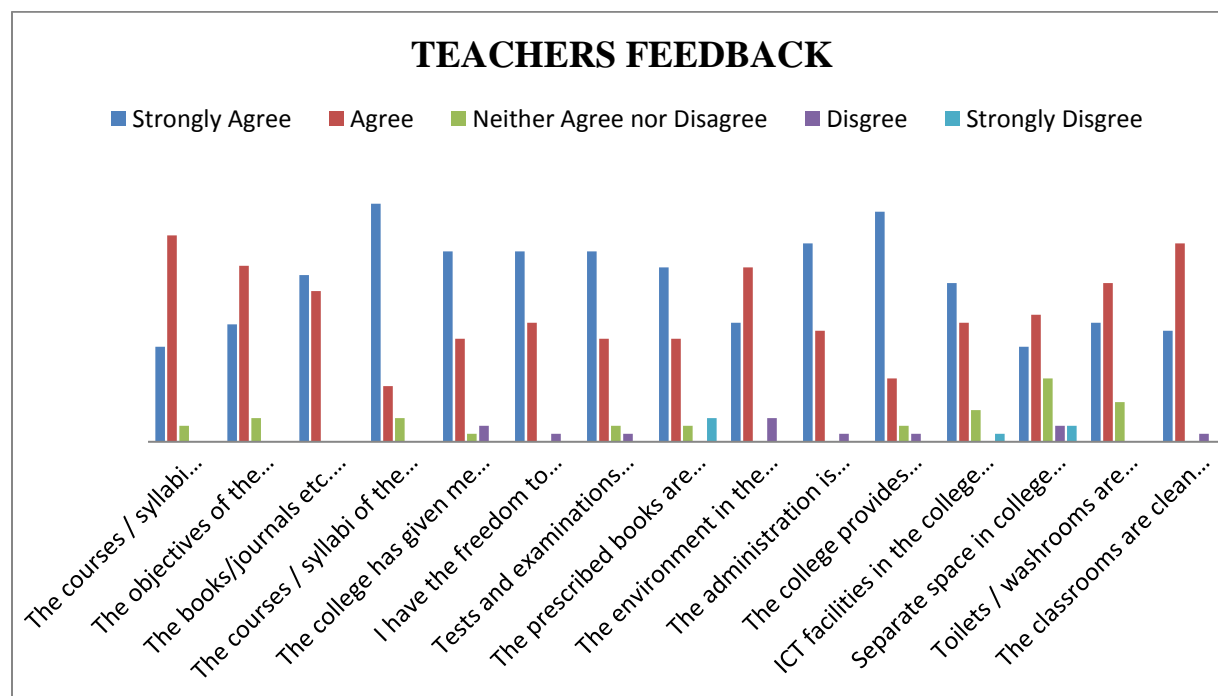
	Teachers								
14	Toilets / washrooms are clean and properly maintained	37.5	50.0	87.5	12.5	0.0	0.0	0.0	100
15	The classrooms are clean and well maintained	35.0	62.5	97.5	0.0	2.5	0.0	0.0	100

Source: Primary Data

Form the table given above, it can be found that more than 92 percent teachers have positively responded to 12 out of the 15 questions. Further, 70 – 87.5 percentage of the teachers have responded positively to three questions in the schedule. This means that, majority of them are satisfied with the teaching and learning process and environment in the college.

Considering the negative responses, question number 13 (Separate space in college Canteen is available for Teachers) has got negative responses from 10 percentage of the teachers. Similarly, 2.5 to 7.5 percent of the teachers have negatively responded to the question numbers eight, nine, 10 ,11 and 12.

Analysis of the feedback shows both strengths and weaknesses in the teaching and learning process and environment. Though the responses obtained from the feedback shows that majority of the teachers are satisfied in the teaching learning process and environment, but, indicates certain improvement in developing conducive learning atmosphere is necessary. The institution has to take keen interest to increase in canteen and ITC facilities for teachers.



ALUMNI FEEDBACK
ON CURRICULUM DESIGN AND IMPLEMENTATION
2019-20

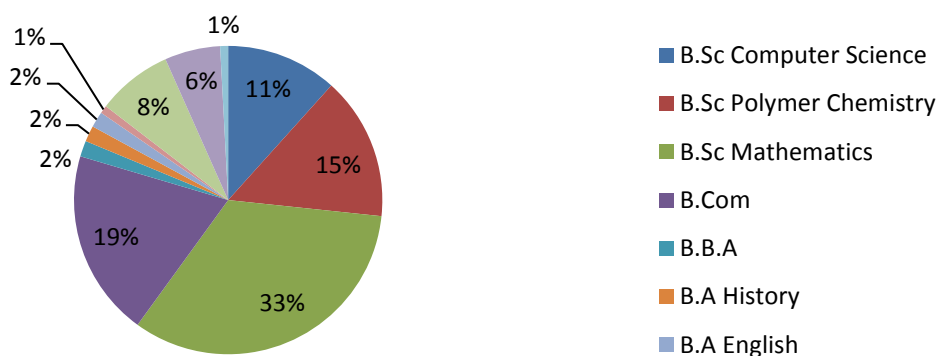
Alumni Feedback on Curriculum Design and Implementation 2019-2020

The Internal Quality Assurance Cell (IQAC) of the NAM College collects alumni feedback on curriculum through online. Alumni, as the former students of an educational institution can provide valuable information regarding the effectiveness of the curriculum and the programmes or courses they studied, changes to be made in the curriculum, their experience in teaching, learning environment and campus life etc., and suggestions for improving all these factors for qualitative improvement of the institution. Considering this end in view feedback was collected from alumni of last five years, by using four scale rating, Viz. Excellent, Very Good, Good, Poor, analyzed and reported. Summary of the report is given below.

Distribution of Alumni by Programme Completed

Sl. No	Programme	Frequency	Percentage
1	B.Sc Computer Science	28	11.7
2	B.Sc Polymer Chemistry	36	15.0
3	B.Sc Mathematics	80	33.3
4	B.Com	47	19.6
5	B.B.A	4	1.7
6	B.A History	4	1.7
7	B.A English	4	1.7
8	M.Com	2	0.8
9	M.Sc Computer Science	19	7.9
10	M.Sc Mathematics	14	5.8
11	M.A English	2	0.8
	Total	240	100.0

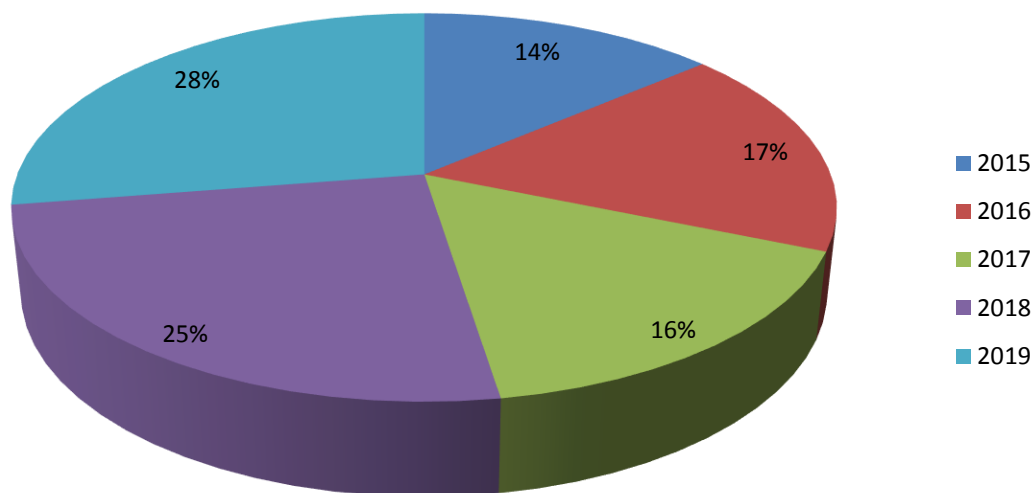
Respondents



Year of Completion

Sl. No	Year of Completion	Frequency	Percentage
1	2015	33	13.8
2	2016	42	17.5
3	2017	39	16.3
4	2018	60	25.0
5	2019	66	27.5
	Total	240	100.0

Year of Completion



**TABLE SHOWING DETAILS OF ANALYSIS OF FEEDBACK
COLLECTED FROM ALUMNI MEMBERS**

Sl. No	Parameters	Excellent (In %)	Very Good (In %)	Good (In %)	Poor (In %)	Total (In %)
1.	How do you rate the courses that you have learnt in the college in relation to your current job / occupation	46.0	29.2	23.2	1.6	100
2.	Infrastructure, Lab and canteen facilities	42.5	34.6	20.4	2.5	100
3.	Faculty	54.2	27.9	17.9	0.0	100
4.	Library and Educational Resources	74.2	20.0	5.8	0.0	100
5.	Office Staff	45.0	37.1	17.9	0.0	100
6.	Admission Procedure	51.7	32.5	15.0	0.8	100
7.	Campus atmosphere	66.7	21.7	10.8	0.8	100
8.	Alumni association network of old friends	29.2	29.2	32.9	8.8	100
9.	Representation of alumni in college activities	28.3	27.5	35.4	8.8	100
10.	Overall Rating of the College	48.3	38.3	13.3	0.0	100
Overall Grade Point = 3.31						

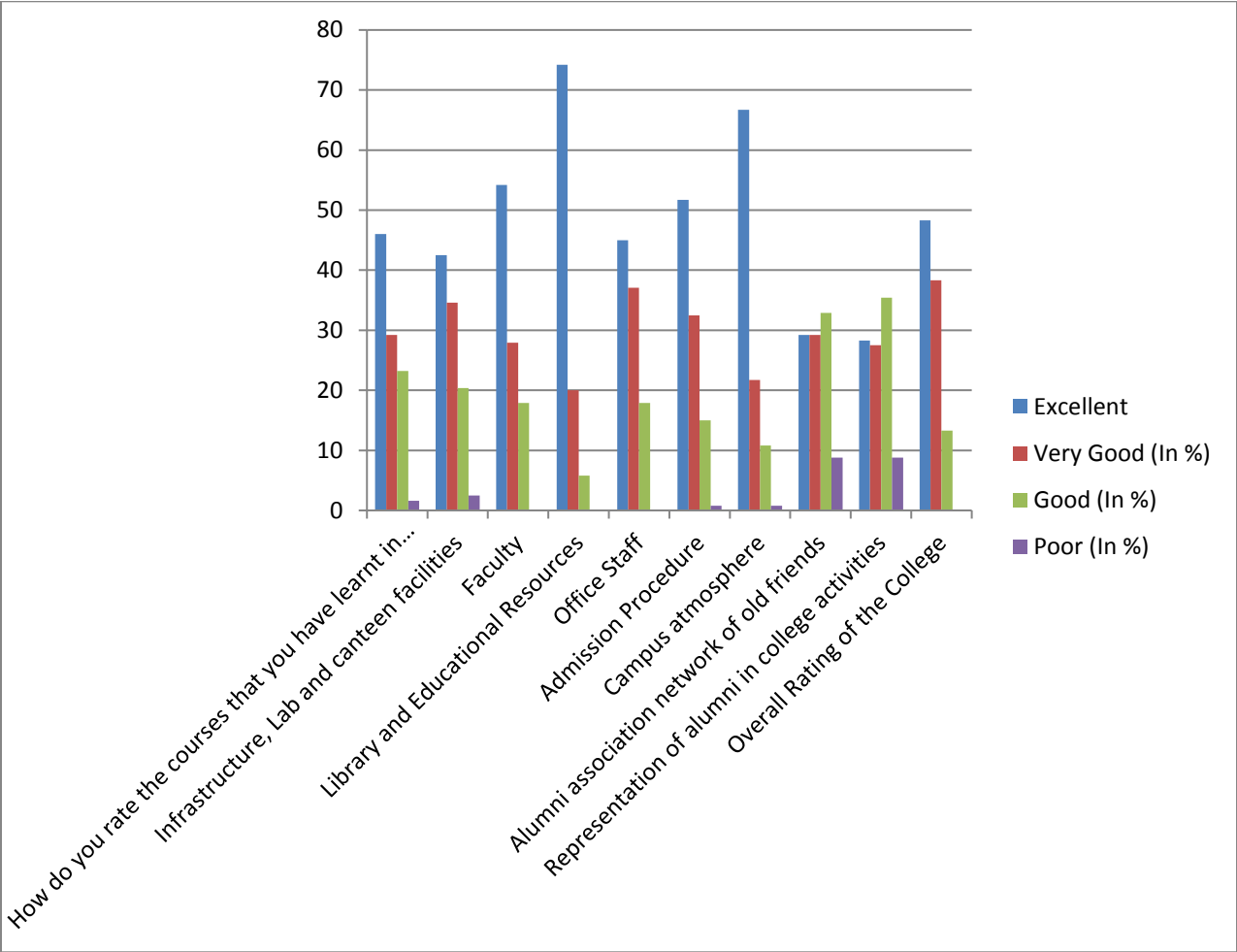
Source: Survey Data

The table given above shows the summary of the analysis of feedback collected from alumni on various matters related to curriculum, facilities in the college, services rendered and other aspects which are directly related to the satisfaction of students as a part of stakeholders of the college. As a part of collection of feedback, a questionnaire with 10 questions in four-point rating scale, was sent to them. The answer to each question has four options viz Excellent =4; Very Good = 3; Good = 2 and Poor =1.

Form the table given above, it can be found that more than three-fourth (i.e more than 75 percent) have positively responded to eight out of the 10 questions. Considering the poor responses, question number eight and nine related with alumni association network and representation in college activities, has got poor responses from nine percentage of the students. While considering this feedback response, the institution and alumni committee has to take keen interest in strengthening alumni network and representing in college activities.

The feedback also shows that all the respondents have expressed overall satisfaction. Further, the overall grade calculated is 3.31, which shows that on an average, the respondents have given very good and excellent ratings to the various questions in the feedback. Thus, it can be concluded that the alumni are very satisfied with the curriculum, teaching and learning process, infrastructural facilities, campus environment and other aspects under review.

Figure
Alumni Feedback on Curriculum Design and Implementation



**STUDENT'S FEEDBACK ON TEACHERS REPORT
(2019-20)**

STUDENT'S FEEDBACK ON TEACHERS REPORT (2019-20)

Feedback is the process in which part of the output of a system is returned to its input in order to regulate its further output. It should be an essential part of education, training and personal development. NAM College has an effective system for collecting and analyzing the student's feedback regarding teaching, learning process and teachers qualities in department wise.

The questionnaire used for student's feedback on teachers consists of the following questions. Students' opinion on various objectives are measured in a five point scale (not satisfactory – 1, satisfactory-2, Good-3, Very good-4, Excellent-5). The data collected from the students of each department are analyzed and the conclusions are given below.

SL.No	Statements
Q1	Knowledge base of the teacher
Q2	Communication skill of the teacher
Q3	Teacher's ability to conduct unit tests, assignment
Q4	Teacher's advice on academic, moral and personal matters
Q5	Sincerity and punctuality of the teacher
Q6	Interaction with the teacher in and out of the class
Q7	Overall rating of the teacher

NAM COLLEGE KALLIKKANDY
POST GRADUATE DEPARTMENT OF COMMERCE
STUDENTS FEEDBACK REPORT (2019-20)

CLASS WISE ANALYSIS

First year M.Com

Descriptive Statistics					
	N	Minimum	Maximum	Mean	Std. Deviation
Knowledge base of the teacher	180	1.00	5.00	4.7000	.54823
Communication skill of the teacher	180	1.00	5.00	4.2500	.81106
Teacher's ability to conduct unit tests, assignment	180	1.00	5.00	4.4944	.73612
Teacher's advice on academic, moral and personal matters	180	1.00	5.00	4.2000	.99384
Sincerity and punctuality of the teacher	180	1.00	5.00	4.6056	.65585
Interaction with the teacher in and out of the class	180	1.00	5.00	4.3944	.90001
Overall rating of the teacher	180	1.00	5.00	4.5611	.60873

Second year M.Com

Descriptive Statistics					
	N	Minimum	Maximum	Mean	Std. Deviation
Knowledge base of the teacher	160	1.00	5.00	4.7250	.54887
Communication skill of the teacher	160	1.00	5.00	4.2687	.82965
Teacher's ability to conduct unit tests, assignment	160	1.00	5.00	4.5562	.70708
Teacher's advice on academic, moral and personal matters	160	1.00	5.00	4.1313	1.01015
Sincerity and punctuality of the teacher	160	1.00	5.00	4.6125	.66340
Interaction with the teacher in and out of the class	160	1.00	5.00	4.3750	.92994
Overall rating of the teacher	160	1.00	5.00	4.5062	.63441

First year B.Com

Descriptive Statistics					
	N	Minimum	Maximum	Mean	Std. Deviation
Knowledge base of the teacher	322	1.00	5.00	4.6522	.61912
Communication skill of the teacher	322	2.00	5.00	4.5311	.70200
Teacher's ability to conduct unit tests, assignment	322	2.00	5.00	4.4596	.70595
Teacher's advice on academic, moral and personal matters	322	2.00	5.00	4.4783	.68891
Sincerity and punctuality of the teacher	322	2.00	5.00	4.5342	.67470
Interaction with the teacher in and out of the class	322	1.00	5.00	4.4627	.74057
Overall rating of the teacher	322	2.00	5.00	4.5000	.68472

Second year B.Com

Descriptive Statistics					
	N	Minimum	Maximum	Mean	Std. Deviation
Knowledge base of the teacher	352	2.00	5.00	4.6477	.63676
Communication skill of the teacher	352	1.00	5.00	4.4659	.77642
Teacher's ability to conduct unit tests, assignment	352	2.00	5.00	4.6534	.59847
Teacher's advice on academic, moral and personal matters	352	1.00	5.00	4.3182	.96722
Sincerity and punctuality of the teacher	352	2.00	5.00	4.6875	.59825
Interaction with the teacher in and out of the class	352	1.00	5.00	4.5057	.86724
Overall rating of the teacher	352	1.00	5.00	4.4744	.78040

Third year B.Com

Descriptive Statistics					
	N	Minimum	Maximum	Mean	Std. Deviation
Knowledge base of the teacher	216	2.00	5.00	4.6343	.62545
Communication skill of the teacher	216	1.00	5.00	4.2963	.90743
Teacher's ability to conduct unit tests, assignment	216	2.00	5.00	4.4491	.77592
Teacher's advice on academic, moral and personal matters	216	1.00	5.00	4.1157	1.01639
Sincerity and punctuality of the teacher	216	1.00	5.00	4.4120	.84724
Interaction with the teacher in and out of the class	216	1.00	5.00	4.2870	1.04370
Overall rating of the teacher	216	2.00	5.00	4.6065	.72674

Overall

Descriptive Statistics					
	N	Minimum	Maximum	Mean	Std. Deviation
Knowledge base of the teacher	1230	1.00	5.00	4.6642	.60667
Communication skill of the teacher	1230	1.00	5.00	4.3959	.80184
Teacher's ability to conduct unit tests, assignment	1230	1.00	5.00	4.5309	.69890
Teacher's advice on academic, moral and personal matters	1230	1.00	5.00	4.2829	.93113
Sincerity and punctuality of the teacher	1230	1.00	5.00	4.5772	.68943
Interaction with the teacher in and out of the class	1230	1.00	5.00	4.4228	.88573
Overall rating of the teacher	1230	1.00	5.00	4.5211	.70506

Teacher Wise Analysis

	MT		MKK		RK		KS		BB	
Criteria	Mean	SD	Mean	SD	Mean	SD	Mean	SD	Mean	SD
Knowledge base of the teacher	4.97	0.16	4.75	0.44	4.66	0.83	4.78	0.46	4.89	0.39
Communication skill of the teacher	4.97	0.33	4.25	0.55	4.01	0.95	4.35	0.89	4.91	0.29
Teacher's ability to conduct unit tests, assignment	4.91	0.36	4.00	0.73	4.49	0.91	4.75	0.56	4.66	0.57
Teacher's advice on academic, moral and personal matters	4.87	0.52	4.45	0.76	4.40	0.13	4.29	1.11	4.86	0.41
Sincerity and punctuality of the teacher	4.96	0.19	4.65	0.59	4.27	1.01	4.66	0.74	4.95	0.21
Interaction with the teacher in and out of the class	4.80	0.72	4.40	0.75	4.02	0.77	4.17	1.29	4.89	0.32
Overall rating of the teacher	4.92	0.37	4.85	0.37	4.37	0.88	4.56	0.72	4.91	0.29
Valid N	157		20							

MT: Dr. Majeesh T

MKK: Dr. Mohammed Kutty KK

RK: Sri. Rajesh Kumar ER

KS: Sri. K.S Musthafa

BB: Adv. Babitha Balaraj

NAM COLLEGE KALLIKKANDY
DEPARTMENT OF COMPUTER SCIENCE
STUDENTS FEEDBACK REPORT (2019-20)

CLASS WISE ANALYSIS

First Year

Descriptive Statistics					
	N	Minimum	Maximum	Mean	Std. Deviation
Knowledge base of the teacher	310	1.00	5.00	4.4774	.80319
Communication skill of the teacher	310	1.00	5.00	4.3032	.90931
Teacher's ability to conduct unit tests, assignment	310	1.00	5.00	4.2613	.91347
Teacher's advice on academic, moral and personal matters	310	1.00	5.00	4.2097	.98758
Sincerity and punctuality of the teacher	310	1.00	5.00	4.3484	.87462
Interaction with the teacher in and out of the class	310	1.00	5.00	4.2065	1.05938
Overall rating of the teacher	310	1.00	5.00	4.2677	.88639

Second Year

Descriptive Statistics					
	N	Minimum	Maximum	Mean	Std. Deviation
Knowledge base of the teacher	150	4.00	5.00	4.9400	.23828
Communication skill of the teacher	150	3.00	5.00	4.7333	.45857
Teacher's ability to conduct unit tests, assignment	150	3.00	5.00	4.8267	.41364
Teacher's advice on academic, moral and personal matters	150	2.00	5.00	4.5667	.58409
Sincerity and punctuality of the teacher	150	3.00	5.00	4.7400	.48369
Interaction with the teacher in and out of the class	150	3.00	5.00	4.6600	.54131
Overall rating of the teacher	150	3.00	5.00	4.6333	.52350

Third Year

Descriptive Statistics					
	N	Minimum	Maximum	Mean	Std. Deviation
Knowledge base of the teacher	160	4.00	5.00	4.9125	.28345
Communication skill of the teacher	160	4.00	5.00	4.7000	.45970
Teacher's ability to conduct unit tests, assignment	160	4.00	5.00	4.8313	.37571
Teacher's advice on academic, moral and personal matters	160	4.00	5.00	4.6313	.48398
Sincerity and punctuality of the teacher	160	4.00	5.00	4.8000	.40126
Interaction with the teacher in and out of the class	160	1.00	5.00	4.7063	.53314
Overall rating of the teacher	160	4.00	5.00	4.6750	.46985

Overall

Descriptive Statistics					
	N	Minimum	Maximum	Mean	Std. Deviation
Knowledge base of the teacher	620	1.00	5.00	4.7016	.63780
Communication skill of the teacher	620	1.00	5.00	4.5097	.74866
Teacher's ability to conduct unit tests, assignment	620	1.00	5.00	4.5452	.75809
Teacher's advice on academic, moral and personal matters	620	1.00	5.00	4.4048	.81721
Sincerity and punctuality of the teacher	620	1.00	5.00	4.5597	.72436
Interaction with the teacher in and out of the class	620	1.00	5.00	4.4452	.87242
Overall rating of the teacher	620	1.00	5.00	4.4613	.74338
Average value	620	1.00	5.00	4.7016	.63780

Teacher Wise Analysis

	Sri. Muhammed Shafi P		Sri. Haseeb VV		Miss. Zuhara P.K		Smt. Minimol VK	
Criteria	Mean	SD	Mean	SD	Mean	SD	Mean	SD
Knowledge base of the teacher	4.6022	.82277	4.9355	.24700	4.9355	.24768	4.9375	.24593
Communication skill of the teacher	4.3978	.92242	4.7312	.44575	4.6129	.49106	4.7188	.45680
Teacher's ability to conduct unit tests, assignment	4.6022	.76811	4.7312	.61041	4.7742	.42153	4.7813	.42001
Teacher's advice on academic, moral and personal matters	4.2366	.86474	4.7312	.44575	4.6129	.49106	4.7188	.45680
Sincerity and punctuality of the teacher	4.7312	.64504	4.7204	.47470	4.7742	.42153	4.8438	.36890
Interaction with the teacher in and out of the class	4.3656	.91823	4.7204	.57796	4.7419	.44114	4.7813	.42001
Overall rating of the teacher	4.2581	.91963	4.7312	.46950	4.6774	.47128	4.6875	.47093
Valid N	93		93		62		32	

Teacher Wise Analysis

	Sri. Sayed Muhammed Fasil PP		Sri. Gafoor I		Miss. Swathi		Sri. Gireesh V	
Criteria	Mean	SD	Mean	SD	Mean	SD	Mean	SD
Knowledge base of the teacher	4.6984	.46263	4.9667	.18257	4.7097	.46141	4.6557	.81415
Communication skill of the teacher	4.6190	.55150	4.8667	.43417	4.6129	.49514	4.3443	.98124
Teacher's ability to conduct unit tests, assignment	4.6508	.51302	4.8333	.37905	4.5484	.50588	4.5082	.88737
Teacher's advice on academic, moral and personal matters	4.4603	.64321	4.6333	.55605	4.5806	.50161	4.0984	1.09095
Sincerity and punctuality of the teacher	4.6190	.63318	4.7667	.43018	4.4839	.62562	4.4262	.88429
Interaction with the teacher in and out of the class	4.6349	.70257	4.7000	.59596	4.4516	.72290	4.1475	1.09295
Overall rating of the teacher	4.5714	.55979	4.7333	.44978	4.5484	.56796	4.2459	.86902
Valid N	63		30		31		61	

Teacher Wise Analysis

	Dr. Yusuf Arun		Smt. Priya Nair		Miss. Anupama		Miss. Shelna P	
Criteria	Mean	SD	Mean	SD	Mean	SD	Mean	SD
Knowledge base of the teacher	4.2903	.97275	4.5484	.67521	4.3871	.84370	4.2258	.76200
Communication skill of the teacher	4.0000	1.12546	4.2903	.93785	4.2581	.85509	4.2258	.76200
Teacher's ability to conduct unit tests, assignment	3.7742	1.17501	4.2581	.92979	4.0645	1.06256	4.0645	.77182
Teacher's advice on academic, moral and personal matters	3.8065	1.24952	4.1613	1.09839	4.1935	.94585	3.9677	.91228
Sincerity and punctuality of the teacher	3.8710	1.08756	4.3871	.76059	4.0968	1.07563	4.0000	.73030
Interaction with the teacher in and out of the class	3.6129	1.28264	4.2581	1.06357	4.1935	1.07763	4.0000	1.00000
Overall rating of the teacher	3.9355	1.03071	4.3226	.79108	4.1613	.96943	4.0645	.77182
Valid N	31		31		31		31	

Teacher Wise Analysis

	Dr. Sathyanarayana n A		Dr. Shaik Apseer Basha		Sri. Abdul Gafoor CV		Miss. Rajina CM	
Criteria	Mean	SD	Mean	SD	Mean	SD	Mean	SD
Knowledge base of the teacher	4.6667	.50000	4.8750	.35355	4.5000	.83666	5.0000	.00000
Communication skill of the teacher	4.6667	.50000	4.7500	.46291	4.6667	.51640	4.6250	.51755
Teacher's ability to conduct unit tests, assignment	4.6667	.50000	4.7500	.46291	4.5000	.83666	4.8750	.35355
Teacher's advice on academic, moral and personal matters	4.7778	.44096	4.7500	.46291	4.8333	.40825	4.7500	.46291
Sincerity and punctuality of the teacher	4.6667	.50000	4.8750	.35355	4.3333	1.21106	5.0000	.00000
Interaction with the teacher in and out of the class	4.5556	.72648	4.8750	.35355	4.3333	.81650	4.5000	.53452
Overall rating of the teacher	4.6667	.50000	4.8750	.35355	4.6667	.51640	5.0000	.00000
Valid N	09		08		06		08	

NAM COLLEGE KALLIKKANDY
DEPARTMENT OF ENGLISH
STUDENTS FEEDBACK REPORT 2019-20

CLASS WISE ANALYSIS

First year BA English

Descriptive Statistics					
	N	Minimum	Maximum	Mean	Std. Deviation
Knowledge base of the teacher	238	3.00	5.00	4.7269	.50836
Communication skill of the teacher	238	1.00	5.00	4.4538	.69656
Teacher's ability to conduct unit tests, assignment	238	2.00	5.00	4.4076	.75603
Teacher's advice on academic, moral and personal matters	238	1.00	5.00	4.3697	.75042
Sincerity and punctuality of the teacher	238	1.00	5.00	4.5672	.67638
Interaction with the teacher in and out of the class	238	1.00	5.00	4.3908	.80258
Overall rating of the teacher	238	2.00	5.00	4.4874	.61439

Second year BA English

Descriptive Statistics					
	N	Minimum	Maximum	Mean	Std. Deviation
Knowledge base of the teacher	210	3.00	5.00	4.7762	.46133
Communication skill of the teacher	210	3.00	5.00	4.6952	.55551
Teacher's ability to conduct unit tests, assignment	210	3.00	5.00	4.6333	.55668
Teacher's advice on academic, moral and personal matters	210	3.00	5.00	4.7810	.44788
Sincerity and punctuality of the teacher	210	3.00	5.00	4.7143	.48349
Interaction with the teacher in and out of the class	210	3.00	5.00	4.7095	.55888
Overall rating of the teacher	210	3.00	5.00	4.6810	.54300

Third year BA English

Descriptive Statistics					
	N	Minimum	Maximum	Mean	Std. Deviation
Knowledge base of the teacher	175	3.00	5.00	4.7257	.48444
Communication skill of the teacher	175	3.00	5.00	4.7314	.46964
Teacher's ability to conduct unit tests, assignment	175	3.00	5.00	4.6171	.52165
Teacher's advice on academic, moral and personal matters	175	3.00	5.00	4.7543	.45759
Sincerity and punctuality of the teacher	175	3.00	5.00	4.7143	.47775
Interaction with the teacher in and out of the class	175	3.00	5.00	4.6971	.48512
Overall rating of the teacher	175	3.00	5.00	4.6457	.54685

Overall

Descriptive Statistics					
	N	Minimum	Maximum	Mean	Std. Deviation
Knowledge base of the teacher	623	3.00	5.00	4.7432	.48599
Communication skill of the teacher	623	1.00	5.00	4.6132	.60514
Teacher's ability to conduct unit tests, assignment	623	2.00	5.00	4.5425	.63981
Teacher's advice on academic, moral and personal matters	623	1.00	5.00	4.6164	.61507
Sincerity and punctuality of the teacher	623	1.00	5.00	4.6581	.56730
Interaction with the teacher in and out of the class	623	1.00	5.00	4.5843	.66290
Overall rating of the teacher	623	2.00	5.00	4.5971	.57810

Teacher Wise Analysis

	Dr. Yusef Arun		Smt. Priya Nair		Sri. Sadique Ali		Miss. Shelna P	
Criteria	Mean	SD	Mean	SD	Mean	SD	Mean	SD
Knowledge base of the teacher	4.7075	.55148	4.9057	.29369	4.5849	.59949	4.6075	.54525
Communication skill of the teacher	4.2925	.78032	4.7453	.45901	4.5566	.63366	4.4766	.64932
Teacher's ability to conduct unit tests, assignment	4.2642	.70781	4.6792	.46898	4.3585	.66460	4.4019	.73792
Teacher's advice on academic, moral and personal matters	4.4623	.74546	4.7547	.45380	4.7453	.49879	4.3364	.67214
Sincerity and punctuality of the teacher	4.6038	.54649	4.8019	.42359	4.4151	.70194	4.5234	.67776
Interaction with the teacher in and out of the class	4.1698	.85603	4.7547	.49399	4.7642	.52648	4.3271	.68371
Overall rating of the teacher	4.4057	.65869	4.8679	.41577	4.3113	.57509	4.4486	.66210
Valid N	104		104		104		104	

Teacher Wise Analysis

	Miss. Anupama		Miss. Dilsha S Ravindran		Miss. Prajila		Dr. Sathyanarayanan A	
Criteria	Mean	SD	Mean	SD	Mean	SD	Mean	SD
Knowledge base of the teacher	4.7103	.45577	4.8286	.45282	5.0000	.00000	5.0000	.00000
Communication skill of the teacher	4.7477	.45750	4.8857	.32280	4.7941	.41043	4.5455	.68755
Teacher's ability to conduct unit tests, assignment	4.7196	.51017	4.8571	.35504	5.0000	.00000	4.7273	.64667
Teacher's advice on academic, moral and personal matters	4.6542	.63100	4.9143	.28403	4.7059	.57889	4.5455	.68755
Sincerity and punctuality of the teacher	4.7570	.47267	4.8571	.35504	4.9118	.28790	4.6364	.50452
Interaction with the teacher in and out of the class	4.7196	.56292	4.9143	.28403	4.6471	.54397	4.4545	.82020
Overall rating of the teacher	4.7103	.45577	4.9143	.28403	4.8824	.32703	4.6364	.50452
Valid N	104		35		34		11	

Teacher Wise Analysis

	Dr. Shaik Apseer Basha		Sri. Abdul Gafoor CV		Miss. Rajina CM	
Criteria	Mean	SD	Mean	SD	Mean	SD
Knowledge base of the teacher	5.0000	.00000	5.0000	.00000	4.8000	.42164
Communication skill of the teacher	5.0000	.00000	4.7143	.48795	5.0000	.00000
Teacher's ability to conduct unit tests, assignment	4.8333	.40825	4.0000	.81650	4.8000	.63246
Teacher's advice on academic, moral and personal matters	5.0000	.00000	4.4286	.53452	4.8000	.42164
Sincerity and punctuality of the teacher	5.0000	.00000	4.4286	.53452	4.9000	.31623
Interaction with the teacher in and out of the class	5.0000	.00000	4.4286	.78680	4.9000	.31623
Overall rating of the teacher	5.0000	.00000	4.4286	.53452	4.8000	.42164
Valid N	06					

NAM COLLEGE KALLIKKANDY

DEPARTMENT OF HISTORY

STUDENTS FEEDBACK REPORT

CLASS WISE ANALYSIS

First year

Descriptive Statistics					
	N	Minimum	Maximum	Mean	Std. Deviation
Knowledge base of the teacher	276	3.00	5.00	4.7210	.51705
Communication skill of the teacher	276	3.00	5.00	4.5399	.60471
Teacher's ability to conduct unit tests, assignment	276	3.00	5.00	4.4855	.63516
Teacher's advice on academic, moral and personal matters	276	3.00	5.00	4.4710	.66269
Sincerity and punctuality of the teacher	276	3.00	5.00	4.6087	.62009
Interaction with the teacher in and out of the class	276	3.00	5.00	4.5145	.67404
Overall rating of the teacher	276	3.00	5.00	4.5725	.61953

Second year

Descriptive Statistics					
	N	Minimum	Maximum	Mean	Std. Deviation
Knowledge base of the teacher	180	3.00	5.00	4.9500	.24277
Communication skill of the teacher	180	1.00	5.00	4.5778	.70080
Teacher's ability to conduct unit tests, assignment	180	1.00	5.00	4.5167	.91831
Teacher's advice on academic, moral and personal matters	180	1.00	5.00	4.4222	.95107
Sincerity and punctuality of the teacher	180	2.00	5.00	4.7222	.67729
Interaction with the teacher in and out of the class	180	1.00	5.00	4.0722	1.12875
Overall rating of the teacher	180	1.00	5.00	4.6111	.69627

Third year

Descriptive Statistics					
	N	Minimum	Maximum	Mean	Std. Deviation
Knowledge base of the teacher	69	4.00	5.00	4.9855	.12039
Communication skill of the teacher	69	3.00	5.00	4.7681	.48945
Teacher's ability to conduct unit tests, assignment	69	3.00	5.00	4.6377	.56805
Teacher's advice on academic, moral and personal matters	69	3.00	5.00	4.7246	.53917
Sincerity and punctuality of the teacher	69	4.00	5.00	4.9130	.28384
Interaction with the teacher in and out of the class	69	3.00	5.00	4.2754	.68350
Overall rating of the teacher	69	4.00	5.00	4.8696	.33925

Overall

Descriptive Statistics					
	N	Minimum	Maximum	Mean	Std. Deviation
Knowledge base of the teacher	525	3.00	5.00	4.8343	.42034
Communication skill of the teacher	525	1.00	5.00	4.5829	.62950
Teacher's ability to conduct unit tests, assignment	525	1.00	5.00	4.5162	.73764
Teacher's advice on academic, moral and personal matters	525	1.00	5.00	4.4876	.76564
Sincerity and punctuality of the teacher	525	2.00	5.00	4.6876	.61590
Interaction with the teacher in and out of the class	525	1.00	5.00	4.3314	.88059
Overall rating of the teacher	525	1.00	5.00	4.6248	.62560

Teacher Wise Analysis

	D r. Jose MV		Dr. Joy Varkey		Miss. Prajila Edavana		Miss. Dhanisha V		Dr. Muneera Beebi E K	
Criteria	Mean	SD	Mean	SD	Mean	SD	Mean	SD	Mean	SD
Knowledge base of the teacher	4.980	0.141	4.980	0.201	4.962	0.192	4.500	0.658	4.933	0.254
Communication skill of the teacher	4.838	0.467	4.727	0.470	4.566	0.500	4.304	0.662	4.867	0.346
Teacher's ability to conduct unit tests, assignment	4.677	0.491	4.525	0.787	4.925	0.385	4.391	0.649	4.800	0.407
Teacher's advice on academic, moral and personal matters	4.788	0.558	4.657	0.609	4.698	0.607	4.261	0.713	4.800	0.551
Sincerity and punctuality of the teacher	4.879	0.385	4.808	0.467	5.000	0.000	4.652	0.526	4.800	0.551
Interaction with the teacher in and out of the class	4.798	0.451	4.333	0.782	4.000	0.784	4.435	0.750	4.167	0.648
Overall rating of the teacher	4.899	0.335	4.778	0.442	4.811	0.395	4.500	0.624	4.800	0.551
Valid N	99		99		53		46		30	

	Mr.Sadique Ali KP		Miss. Shelna P		Miss. Anupama K		Dr. Yusuf Arun	
Criteria	Mean	SD	Mean	SD	Mean	SD	Mean	SD
Knowledge base of the teacher	4.565	0.583	4.724	0.506	4.681	0.515	5.000	0.000
Communication skill of the teacher	4.435	0.620	4.158	0.880	4.426	0.617	5.000	0.000
Teacher's ability to conduct unit tests, assignment	4.283	0.688	4.184	1.003	4.447	0.686	4.448	0.948
Teacher's advice on academic, moral and personal matters	4.304	0.695	3.855	1.029	4.383	0.709	4.655	0.670
Sincerity and punctuality of the teacher	4.370	0.771	4.250	0.896	4.489	0.655	4.966	0.186
Interaction with the teacher in and out of the class	4.413	0.777	3.697	1.347	4.426	0.683	4.724	0.528
Overall rating of the teacher	4.435	0.779	4.092	0.836	4.468	0.620	4.793	0.412
Valid N	46		76		46		30	

NAM COLLEGE KALLIKKANDY
DEPARTMENT OF MATHEMATICS
STUDENTS FEEDBACK REPORT

CLASS WISE ANALYSIS

First year

Descriptive Statistics					
	N	Minimum	Maximum	Mean	Std. Deviation
Knowledge base of the teacher	350	1.00	5.00	4.6314	.65440
Communication skill of the teacher	350	1.00	5.00	4.4514	.75450
Teacher's ability to conduct unit tests, assignment	350	1.00	5.00	4.5014	.69739
Teacher's advise on academic, moral and personal matters	350	1.00	5.00	4.4052	.81036
Sincerity and punctuality of the teacher	350	1.00	5.00	4.5014	.73353
Interaction with the teacher in and out of the class	350	1.00	5.00	4.4371	.82947
Overall rating of the teacher	350	1.00	5.00	4.5029	.75984
Average value	350	1.00	5.00	4.5229	.69653

Second year

Descriptive Statistics					
	N	Minimum	Maximum	Mean	Std. Deviation
Knowledge base of the teacher	232	3.00	5.00	4.7500	.50752
Communication skill of the teacher	232	3.00	5.00	4.6595	.57396
Teacher's ability to conduct unit tests, assignment	232	3.00	5.00	4.7888	.49522
Teacher's advise on academic, moral and personal matters	232	3.00	5.00	4.5776	.66646
Sincerity and punctuality of the teacher	232	3.00	5.00	4.8922	.32438
Interaction with the teacher in and out of the class	232	1.00	5.00	4.6034	.78822
Overall rating of the teacher	232	3.00	5.00	4.7026	.56014
Average value	232	3.00	5.00	4.7457	.49235

Third year

Descriptive Statistics					
	N	Minimum	Maximum	Mean	Std. Deviation
Knowledge base of the teacher	90	4.00	5.00	4.9889	.10541
Communication skill of the teacher	90	1.00	5.00	4.7556	.58657
Teacher's ability to conduct unit tests, assignment	90	2.00	5.00	4.9111	.41447
Teacher's advise on academic, moral and personal matters	90	2.00	5.00	4.6667	.65343
Sincerity and punctuality of the teacher	90	4.00	5.00	4.9222	.26932
Interaction with the teacher in and out of the class	90	1.00	5.00	4.6222	.78723
Overall rating of the teacher	90	4.00	5.00	4.8889	.31603
Average value	90	3.00	5.00	4.8333	.40364

Overall

Descriptive Statistics					
	N	Minimum	Maximum	Mean	Std. Deviation
Knowledge base of the teacher	672	1.00	5.00	4.7202	.57182
Communication skill of the teacher	672	1.00	5.00	4.5640	.68543
Teacher's ability to conduct unit tests, assignment	672	1.00	5.00	4.6557	.62232
Teacher's advise on academic, moral and personal matters	672	1.00	5.00	4.5000	.74919
Sincerity and punctuality of the teacher	672	1.00	5.00	4.6930	.60441
Interaction with the teacher in and out of the class	672	1.00	5.00	4.5193	.81322
Overall rating of the teacher	672	1.00	5.00	4.6235	.66390
Average value	672	1.00	5.00	4.6414	.61109

Teacher Wise Analysis

	Sri. Shaju K		Sri. Gafoor I		Miss. Swathi		Sri. Girish V		Smt. Minimol V.K	
Criteria	Mean	SD	Mean	SD	Mean	SD	Mean	SD	Mean	SD
Knowledge base of the teacher	4.903	.3318	4.903	.2973	5.000	.0000	4.714	.6582	4.619	.6332
Communication skill of the teacher	4.699	.5272	4.936	.2470	4.467	.8604	4.191	1.060	4.651	.5725
Teacher's ability to conduct unit tests, assignment	4.796	.4791	4.796	.4791	5.000	.0000	4.778	.6586	4.746	.5379
Teacher's advise on academic, moral and personal matters	4.710	.4791	4.925	.2653	4.167	.8743	4.079	1.005	4.540	.5630
Sincerity and punctuality of the teacher	4.796	.4791	4.893	.3115	4.933	.2537	4.746	.5948	4.635	.6550
Interaction with the teacher in and out of the class	4.538	.9156	4.893	.3115	4.267	.9803	4.238	1.073	4.730	.5450
Overall rating of the teacher	4.774	.5342	4.946	.2268	4.700	.4661	4.413	.9611	4.714	.5515
Average value	4.763	.4978	4.957	.2040	4.633	.5560	4.492	.7803	4.730	.5450
Valid N	93		93		30		63		63	

	Smt. Priya Nair		Dr. Yusuf Arun		Miss. Shelna P		Sri. Sadique Ali K.P	
Criteria	Mean	SD	Mean	SD	Mean	SD	Mean	SD
Knowledge base of the teacher	4.714 3	.5515 0	4.500 0	.7487 4	4.381 0	.8693 4	4.619 0	.5515 0
Communication skill of the teacher	4.460 3	.7144 9	4.352 9	.6911 7	4.285 7	.7916 6	4.396 8	.6608 8
Teacher's ability to conduct unit tests, assignment	4.507 9	.6444 1	4.176 5	.8337 8	4.412 7	.8354 0	4.523 8	.7152 1
Teacher's advise on academic, moral and personal matters	4.317 5	.8580 8	4.117 6	.7692 9	4.142 9	.8202 5	4.476 2	.6440 1
Sincerity and punctuality of the teacher	4.682 5	.5909 4	4.323 5	.8060 6	4.444 4	.8940 3	4.587 3	.6632 0
Interaction with the teacher in and out of the class	4.190 5	1.060 39	4.205 9	.8082 7	4.190 5	.9479 5	4.650 8	.5999 7
Overall rating of the teacher	4.444 4	.7356 8	4.264 7	.8278 8	4.333 3	.8424 2	4.507 9	.6926 6
Average value	4.476 2	.6922 9	4.235 3	.7807 9	4.333 3	.7828 8	4.587 3	.5857 1
Valid N	63		34		63		63	

	Dr. Sathyanarayanan A		Dr. Shaik Apseer Basha		Sri. Abdul Gafoor CV		Miss. Rajina CM	
Criteria	Mean	SD	Mean	SD	Mean	SD	Mean	SD
Knowledge base of the teacher	4.6800	.55678	4.7097	.58842	4.7778	.42366	4.7083	.46431
Communication skill of the teacher	4.6800	.47610	4.7097	.52874	4.7407	.44658	4.7083	.46431
Teacher's ability to conduct unit tests, assignment	4.7200	.45826	4.7097	.52874	4.5926	.50071	4.5652	.50687
Teacher's advise on academic, moral and personal matters	4.6667	.56466	4.7742	.49730	4.7692	.42967	4.6667	.48154
Sincerity and punctuality of the teacher	4.7917	.50898	4.7097	.58842	4.6296	.49210	4.6667	.48154
Interaction with the teacher in and out of the class	4.6400	.56862	4.7419	.51431	4.7407	.44658	4.6667	.48154
Overall rating of the teacher	4.6400	.48990	4.8065	.47745	4.7407	.44658	4.6667	.48154
Average value	4.7200	.45826	4.7742	.49730	4.7778	.42366	4.6667	.48154
Valid N								

NAM COLLEGE KALLIKKANDY
DEPARTMENT OF POLYMER CHEMISTRY
STUDENTS FEEDBACK REPORT 2019-20

CLASS WISE ANALYSIS

First year

Descriptive Statistics					
	N	Minimum	Maximum	Mean	Std. Deviation
Knowledge base of the teacher	272	2.00	5.00	4.7390	.64991
Communication skill of the teacher	272	2.00	5.00	4.5809	.75437
Teacher's ability to conduct unit tests, assignment	272	2.00	5.00	4.6360	.72123
Teacher's advise on accademic, moral and personal matters	272	1.00	5.00	4.4559	.86223
Sincerity andpunctuality of the teacher	272	2.00	5.00	4.6618	.70549
Interaction with the teacher in and out of the class	272	2.00	5.00	4.5147	.83277
Overall rating of the teacher	272	2.00	5.00	4.6066	.76092

Second Year

Descriptive Statistics					
	N	Minimum	Maximum	Mean	Std. Deviation
Knowledge base of the teacher	145	3.00	5.00	4.7517	.52083
Communication skill of the teacher	145	3.00	5.00	4.5586	.63329
Teacher's ability to conduct unit tests, assignment	145	3.00	5.00	4.6069	.60434
Teacher's advise on accademic, moral and personal matters	145	1.00	5.00	4.4345	.70528
Sincerity andpunctuality of the teacher	145	3.00	5.00	4.6552	.59371
Interaction with the teacher in and out of the class	145	2.00	5.00	4.5310	.64609
Overall rating of the teacher	145	3.00	5.00	4.5931	.59508

Third Year

Descriptive Statistics					
	N	Minimum	Maximum	Mean	Std. Deviation
Knowledge base of the teacher	120	2.00	5.00	4.7917	.48326
Communication skill of the teacher	120	2.00	5.00	4.8167	.50182
Teacher's ability to conduct unit tests, assignment	120	2.00	5.00	4.8417	.50203
Teacher's advise on accademic, moral and personal matters	120	2.00	5.00	4.9083	.38883
Sincerity andpunctuality of the teacher	120	2.00	5.00	4.8833	.45251
Interaction with the teacher in and out of the class	120	2.00	5.00	4.8000	.46018
Overall rating of the teacher	120	2.00	5.00	4.9250	.39242

Overall

Descriptive Statistics					
	N	Minimum	Maximum	Mean	Std. Deviation
Knowledge base of the teacher	537	2.00	5.00	4.7542	.58200
Communication skill of the teacher	537	2.00	5.00	4.6276	.67954
Teacher's ability to conduct unit tests, assignment	537	2.00	5.00	4.6741	.65216
Teacher's advise on accademic, moral and personal matters	537	1.00	5.00	4.5512	.76153
Sincerity andpunctuality of the teacher	537	2.00	5.00	4.7095	.63287
Interaction with the teacher in and out of the class	537	2.00	5.00	4.5829	.72349
Overall rating of the teacher	537	2.00	5.00	4.6741	.66351
Valid N (listwise)	537				

Teacher Wise Analysis

	Smt. Anusree K		Smt. Shabna		Sri. Namshad KP		Dr. Abdul Rahim		Miss. Swathi	
Criteria	Mean	SD	Mean	SD	Mean	SD	Mean	SD	Mean	SD
Knowledge base of the teacher	4.806 5	.4486 2	4.924 7	.2652 5	4.830 5	.4606 0	4.533 3	.6814 5	4.500 0	.8257 2
Communication skill of the teacher	4.569 9	.6493 8	4.860 2	.4062 4	4.796 6	.4835 1	4.466 7	.8193 1	4.117 6	.8795 6
Teacher's ability to conduct unit tests, assignment	4.763 4	.4977 7	4.957 0	.2039 8	4.694 9	.5649 0	4.533 3	.8603 7	4.382 4	.8881 3
Teacher's advise on academic, moral and personal matters	4.537 6	.7879 4	4.752 7	.5833 9	4.694 9	.6760 5	4.766 7	.6789 1	4.117 6	.9133 6
Sincerity and punctuality of the teacher	4.784 9	.5075 4	4.914 0	.3506 5	4.694 9	.5649 0	4.700 0	.7497 1	4.529 4	.7876 0
Interaction with the teacher in and out of the class	4.623 7	.6412 3	4.698 9	.5669 3	4.830 5	.5302 1	4.533 3	.6814 5	4.147 1	.9576 6
Overall rating of the teacher	4.655 9	.5988 1	4.914 0	.3181 4	4.864 4	.4338 1	4.733 3	.7396 8	4.176 5	.9035 5
Valid N	93		93		59		30		34	

	Sri. Gafoor I		Smt. Minimol VK		Smt. Priya Nair		Miss. Shelna P		Dr. Yusuf Arun	
Criteria	Mean	SD	Mean	SD	Mean	SD	Mean	SD	Mean	SD
Knowledge base of the teacher	4.931 0	.3713 9	4.634 9	.6550 4	4.794 1	.5918 3	4.617 6	.7790 7	4.500 0	.9613 8
Communication skill of the teacher	4.724 1	.5275 7	4.619 0	.6822 3	4.705 9	.6290 6	4.500 0	.8257 2	4.264 7	.9941 9
Teacher's ability to conduct unit tests, assignment	4.689 7	.5413 9	4.555 6	.7134 1	4.647 1	.6911 7	4.470 6	.7876 0	4.294 1	1.000 89
Teacher's advise on academic, moral and personal matters	4.551 7	.6316 8	4.587 3	.6632 0	4.441 2	.7463 5	4.205 9	.9138 5	4.117 6	1.066 42
Sincerity and punctuality of the teacher	4.896 6	.4092 5	4.555 6	.7134 1	4.647 1	.6458 4	4.500 0	.8616 4	4.382 4	.9851 8
Interaction with the teacher in and out of the class	4.655 2	.5526 5	4.619 0	.6822 3	4.558 8	.7045 8	4.352 9	.9172 5	4.088 2	1.083 42
Overall rating of the teacher	4.793 1	.4913 0	4.587 3	.6632 0	4.617 6	.7391 5	4.470 6	.8251 8	4.294 1	1.059 71
Valid N	29		63		34		34		34	

	Dr. Sathyanarayana n A		Dr. Shaik Apseen Pasha		Sri. Gafoor CV		Miss. Rajina CM	
Criteria	Mean	SD	Mean	SD	Mean	SD	Mean	SD
Knowledge base of the teacher	5.0000	.00000	4.8462	.37553	4.8000	.42164	5.0000	.00000
Communication skill of the teacher	5.0000	.00000	4.7692	.59914	4.8000	.42164	5.0000	.00000
Teacher's ability to conduct unit tests, assignment	5.0000	.00000	4.7692	.59914	4.8000	.42164	5.0000	.00000
Teacher's advise on academic, moral and personal matters	5.0000	.00000	4.7692	.59914	4.8000	.42164	5.0000	.00000
Sincerity and punctuality of the teacher	5.0000	.00000	4.8462	.37553	4.8000	.42164	5.0000	.00000
Interaction with the teacher in and out of the class	5.0000	.00000	4.7692	.59914	4.7000	.67495	5.0000	.00000
Overall rating of the teacher	5.0000	.00000	4.8462	.37553	4.8000	.42164	5.0000	.00000
Valid N	6		13		10		5	